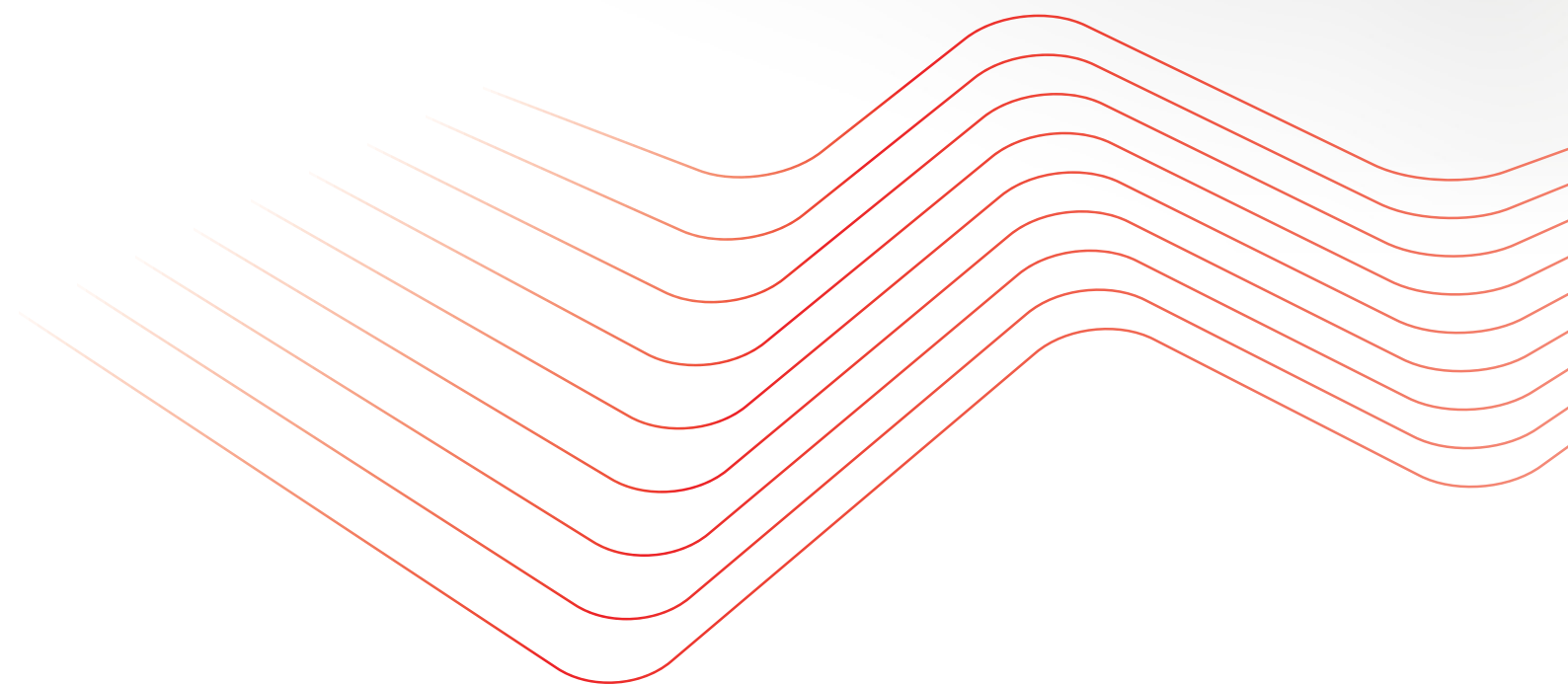


FloorTherm Renewables Product Catalogue 2019

THE WARMTH BENEATH YOUR FEET.



www.ftunderfloor.com


FLOORTHERM
— RENEWABLES LTD. —

CONTENTS



04

UNDERFLOOR HEATING

Fully designed and bespoke underfloor heating systems.



10

DOMUSA AIR SOURCE HEAT PUMPS

8-16kw Monobloc Heat Pumps with pre-plumbed cylinder packages.



16

DAIKIN AIR SOURCE SYSTEMS

Diverse range of Daikin systems for every application, ranging from 4-16kw.



21

MECHANICAL HEAT RECOVERY VENTILATION

Reduce heat loss and improve energy efficiency with our MHRV systems.



28

ALUMINIUM RADIATORS

The perfect choice for Modern, new build or retrofit upgrades.

COMPANY OVERVIEW

Since its foundation in 2013, FloorTherm Underfloor Heating & Renewables has quickly become one of Ireland's largest distributors of underfloor heating & heat pump systems.

Known for our expertise, industry leading design, after sales services and competitive prices. FloorTherm aims to meet all requirements within the renewable heating mechanical sector.

Whether you are involved in a new build or commercial project, FloorTherm caters for all your needs. Our in-house design team provide complimentary heat loss calculation and system layout drawings for all projects. Ensuring energy efficiency & reliability to the end user, this is a must for FloorTherm!

Our complete product range is designed to the highest European standards, guaranteeing excellent system performance for the end user. With modern builds becoming more & more environmentally-friendly along with greater emphasis on end user interaction, the need for our bespoke design services increase. This is design knowledge that we pride ourselves on!

All projects differ, we take each individual scenario at face value and never adopt the "one size fits all" approach. All systems are designed to meet the requirements of the end user, ensuring energy efficiency in a cost-effective manor, all in aesthetically pleasing product ranges.

Our reputation with distributors, installers & specifiers throughout Ireland, is something we are extremely proud of and believe our "one team" approach resonates across our entire customer base.

Our approach to the design of each heating solution we propose is reinforced with rigorous technical integrity and support, both pre-sales & after-sales by our dedicated team or design & service professional.



NATIONWIDE
DELIVERY



SYSTEM
DESIGN



TECHNICAL
SUPPORT



SUPPORT &
TRAINING



04

UNDERFLOOR HEATING

“Our in-house EN1264 design software and experience guarantee the best in system performance, efficiency and reliability.”

FLOORTHERM
RENEWABLES LTD.

4 MAIN BENEFITS

UNDERFLOOR HEATING

FloorTherm Renewables provides bespoke underfloor heating systems. Our systems are of the highest specification; with PE-RT five-layer pipe, stainless steel manifold and intelligent controls system to provide the complete solution to our customer base.



1. COMFORT

Underfloor heating produces an even radiant heat throughout your property. The entire floor radiates heat evenly, as opposed to the conventional radiator system; providing ideal comfort levels.



2. ENERGY EFFICIENCY

Due to lower flow temperatures required for underfloor heating systems, the resulting energy savings are excellent. Our systems are ideally suited for both heat pump & boiler installations.



3. MODERN DESIGN

Newly-built dwellings are increasingly designed with open spaced, flexible areas in mind. FloorTherm provides greater interior design flexibility as it requires no wall space for radiators.



4. HEALTH & SAFETY

Since underfloor is placed within the concrete floor structure, there are no hard edges or hot radiators, minimising injury. It is for that reason, underfloor heating is used in schools & nurseries.

4 TYPES OF FLOORING SYSTEMS

UNDERFLOOR HEATING

FloorTherm Underfloor Heating can provide solutions to any floor structure required to meet the needs of today's marketplace. Solid floor constructions are the most common in the new build market but the need for alternative solutions are becoming increasingly important in the retrofit market. Our in-house design department can provide a system to match the needs for each individual project, while ensuring the regulations of EN1264 are always adhered to.



SOLID FLOOR SCREED

Our most common and energy-efficient solution that features components designed to interweave. This solution creates the ideal foundation for a heating supply network for heat retention.

◆ QUICK & EASY INSTALLATION ◆ HIGH HEAT OUTPUT ◆ COST EFFECTIVE



FLOATING FLOOR

Floating floor structures have become increasingly popular as they not only reduce the overall loading on the building, but also the sound transmissions throughout dwellings.

◆ PRE-ROUTED CHANNELS ◆ MEDIUM HEAT OUTPUT ◆ DIRECT-INSULATION



ALUMINIUM DIFFUSER PLATES

Joist floors do require a different approach to other flooring structures as the floor is not structurally capable of holding a screed. Instead, heat mass aluminium plates are fixed to joists.

◆ RETROFIT MARKET ◆ MEDIUM HEAT OUTPUT ◆ SINGLE OR CHANNEL RUNS



BISCUIT MIX UNDERFLOOR HEATING

The dry "Biscuit Mix" underfloor heating gives extra thermal mass, reduces expansion and also reduces contraction noise which can be experienced as the floor heats and cools.

◆ EXTRA THERMAL MASS ◆ HIGH HEAT OUTPUT ◆ NOISE REDUCTION

SYSTEM COMPONENTS

FloorTherm provides a German-manufactured high specification 5-layer PERT pipe with an internal EVOH oxygen barrier in accordance with EN4726. The pipe design guarantees a non-detachable bond of materials as they are fused together by adhesive layers of polymer. The internal EVOH barrier ensures there is no contact with moisture or external damage thus maintaining its oxygen diffusion barrier for its lifetime.



STAINLESS STEEL MANIFOLD

- ◆ Max pressure = 6 bar
- ◆ Max temperature = 70°C
- ◆ 16mm Eurocones, AAV, Manometer
- ◆ Flow meters with isolation valves



16MM PERT, PERT/AL/PERT

- ◆ DIN4726 regulated
- ◆ DIN16833/16834 regulated
- ◆ KIWA & SKZ approved
- ◆ 100mm-200m-500m-750m coils



HEATING CONTROL

- ◆ Fully adjustable heat controls
- ◆ Accurate temperature to $\pm 1^\circ\text{C}$
- ◆ Available in slimline, neo & wireless
- ◆ Hot water and radiator packages



PUMP & MIXING VALVE SET

- ◆ Quick & easy installation
- ◆ Adjustable range (30-50°C)
- ◆ Control flow temperature ($\pm 2^\circ\text{C}$)
- ◆ Grundfoss A-rated UPS 25-60p/h

STAINLESS STEEL MANIFOLD DATA SHEET

SIZE	PRIMARY CONNECTION	OVERALL HEIGHT	PRIMARY CENTRES	PORT CENTRES	WIDTH (NO PUMP)	DEPTH (NO PUMP)	WIDTH (W/ PUMP)	DEPTH (W/ PUMP)
	Size	A	B	C	D	E		
2	1"	400	210	50	232	87	407	175
3	1"	400	210	50	282	87	457	175
4	1"	400	210	50	332	87	507	175
5	1"	400	210	50	382	87	557	175
6	1"	400	210	50	432	87	607	175
7	1"	400	210	50	482	87	657	175
8	1"	400	210	50	532	87	707	175
9	1"	400	210	50	582	87	757	175
10	1"	400	210	50	632	87	807	175
11	1"	400	210	50	682	87	857	175
12	1"	400	210	50	732	87	907	175

All dimensions are provided in mm unless otherwise stated.

PRICE LIST 2019

UNDERFLOOR HEATING

FLOORTHERM

RENEWABLES LTD.

CODE	FIXINGS	COST (£)
CAP001	1m cliprail with adhesive tape	1.65
CAP008	65mm manual fixing staple (200 per pack)	10.80
CAP003	50mm manual fixing staple (200 per pack)	10.61
CAP002	60mm tacker staple (300 per pack)	11.80
CAP005	50mm tacker staple (250 per pack)	12.50
CAP002A	40mm tacker staples (300 per pack)	8.10
CAP004	25m edge insulation with adhesive back	18.44
CAPR1525C	25m coil of 16mm conduit	15.80
CAPR1550C	50m coil of 16mm conduit	33.64
CAP010	Plastic former bends 14 -18mm	1.89
CAP014	100m2 polythene floor protective membrane	63.45
CAP024	Aluminium plate 1000x390mm (200mm centres)	8.10

CODE	MANIFOLDS	COST (£)
CAPMAN02	2 port manifold	108.45
CAPMAN03	3 port manifold	130.54
CAPMAN04	4 port manifold	153.10
CAPMAN05	5 port manifold	175.84
CAPMAN06	6 port manifold	198.72
CAPMAN07	7 port manifold	221.08
CAPMAN08	8 port manifold	243.33
CAPMAN09	9 port manifold	257.29
CAPMAN10	10 port manifold	288.45
CAPMAN11	11 port manifold	311.23
CAPMAN12	12 port manifold	321.70

Stainless steel manifolds complete with flow meters, temperature gauge, pressure gauge, automatic air vent, euro connectors & isolating valves.

CAP020	Underfloor pump & mixing valve set 25 -50C for direct connection to the manifold	322.09
--------	--	--------

CODE	TOOLS	COST (£)
CAP027	Large 750m pipe decoiler	195.00
CAP025	Lowpipe decoiler with telescopic arm	215.00
CAP006	Staple tacker gun with 10cm handle (for staples CAP002, CAP005, CAP002A)	156.59

CODE	PIPE	COST (£)
HPG001	16mm PE-RT pipe 750m coil	607.50
HPG002	16mm PE-RT pipe 500m coil	405.00
HPG003	16mm PE-RT pipe 200m coil	162.00
HPG004	16mm PE-RT pipe 100m coil	81.00
HPG005	16mm PERT/AL/PERT 500m coil	530.00
HPG006	16mm PERT/AL/PERT 200m coil	212.00
HPG007	16mm PERT/AL/PERT 100m coil	106.00

CONTROLS

CODE	12V	COST (£)
HM021	Slimline N programmable thermostat	64.42
HM002A	8 zone wiring centre	146.20
HM013	Slimline N thermostat with hot water function	69.36

CODE	230V	COST (£)
HM001	Slimline Programmable thermostat	61.88
HM051	4 zone wiring centre	72.35
HM003	8 zone wiring centre	86.36

CODE	WIRELESS	COST (£)
HM014	Slimline RF programmable room thermostat	65.96
HM016	8 zone wireless wiring centre	146.20

CODE	TOUCHSCREEN	COST (£)
HM025	Touchscreen 230v programmable room thermostat	83.86
HM042	Touchscreen 12v programmable room thermostat	86.69
HM035	Touchscreen 12v programmable room thermostat with hot water	89.19

CODE	APP CONTROL	COST (£)
HM020	Neo programmable 12v thermostat	81.66
HM017	Neo programmable 230v thermostat	81.66
HM018	Neo hot water 230v thermostat	81.66
HM038	Neo programmable wireless thermostat	81.66
HM049	Neohub - generation 2	170.25
HM041	Wi-Fi Smart thermostat	148.10
HM037	2 channel RF receiver	51.41
HM034	Neoplug	57.79
HM032	3m Remote floor sensor probe	7.47
HM021	230v actuator	15.23
HM021A	24v actuator	15.23

€ - EURO PRICING AVAILABLE UPON REQUEST



10

DOMUSA AIR SOURCE HEAT PUMPS

“Domusa heat pumps can handle extreme weather conditions as low as -20c. At -10c the 8kw unit can maintain a 5.77kw output with a COP of 3.5.”
(based on a flow temperature of 35C)

FLOORTHERM
RENEWABLES LTD.

DOMUSA

AIR SOURCE HEAT PUMPS

DOMUSA TEKNIK Inverter Driven Air Source Heat Pumps are available in three sizes; 8kw, 11kw & 16kw all with an excellent seasonal efficiency rating from A++ and A+++. The monobloc design offers all components within the outdoor unit requiring a heating flow and return connection.

The Integrated circulating pump means that they can be easily connected to the heating system.



8kW AIR SOURCE HEAT PUMP

Small, compact design with integrated circulating pump. Weather compensation controls increase efficiency and automatically adjusts the desired flow temperature based on outdoor temperature.

◆ 40% ENERGY REDUCTION ◆ HIGHLY EFFICIENT ◆ KIND TO THE ENVIRONMENT



11kW AIR SOURCE HEAT PUMP

Units start at a very low current from 2 – 5 amps, reducing the electrical load on start-up. It controls the load based on demand. No soft starts required, maintaining high efficiency.

◆ QUICK & EASY INSTALLATION ◆ SIMPLE CONTROLS ◆ VERY HIGH COP



16kW AIR SOURCE HEAT PUMP

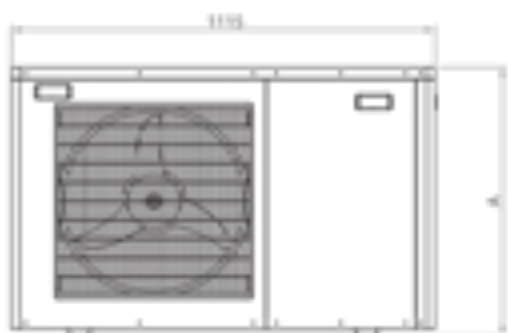
The hot water efficiencies also rate from 97% to 99%, again providing some of the highest figures for any air source unit on the market.

◆ 99% HOT WATER EFFICIENCY ◆ ERP RATING A+++ ◆ OPERATES AT -20°C

For more information, contact our experts today
www.ftunderfloor.com or call us on +44(0)28 30 050 350

TECHNICAL SPECIFICATIONS

MAIN CHARACTERISTICS		DUAL CLIMA 8	DUAL CLIMA 11	DUAL CLIMA 16
η_s Seasonal efficiency	%	163	170	176
SCOP		4.16	4.32	4.48
SEER		4.10	3.40	3.90
COP (T. aire 7°C, T. agua 30/35-EN14511)		4.59	4.24	4.50
Energy Efficiency Class		A++	A++	A+++
Heating output (Air T. 7°C. Water T. 30/35-EN14511)	kW	7.80	10.30	15.50
Cooling output (Air T. 7°C. Water T. 30/35-EN14511)	kW	8.40	9.45	15.70
Ingress protection		IPX4		
Heat Pump Type		Air to Water, Inverter, Monobloc		
Use		Heating, Cooling and DHW		
Cooling		R410A		
Load	kg	2.30	3.30	3.90
Voltage	V	230V/50Hz		
Maximum absorbed cooling power	kW	1.70	2.50	3.44
Maximum absorbed heating power	kW	2.25	3.05	4.40
Noise level	db(A)	46	49	52
Max. flow temperature	°C	60		
Working Temperature range	°C	-20/46		
Nominal working flow	m3/h	1.50	1.85	2.80
Weight	kg	90	125	150



	A	B	C	D
Dual Clima 8	210	402	130	230
Dual Clima 11	970	419	230	130
Dual Clima 16	1270	419	230	130



EA: Water inlet
 SA: Water outlet
 W: Empty valve
 AP: High pressure valve
 BP: Low pressure valve

PRE-PLUMBED PACKAGES

ATTRACTIVE AND NEAT FINISH

QUICK AND EASY INSTALLATION

COMPACT DESIGN

CYLINDER WITH INTEGRATED BUFFER

BETTER SYSTEM FLOW RATES

IMPROVED DEFROST PERFORMANCE



PRICE LIST 2019

DOMUSA AIR SOURCE HEAT PUMPS

CODE	AIR SOURCE HEAT PUMPS	COST (£)
DOMCLIMA8	Domusa Monobloc Clima 8 kW	2,900.00
DOMCLIMA11	Domusa Monobloc Clima 11 kW	3,500.00
DOMCLIMA16	Domusa Monobloc Clima 16 kW	4,650.00
DOMELEMENT01	2.5kW backup heater hydraulic set	300.00

Note: Heat pump includes controller & integrated heating circulating pump.

CODE	ACCESSORIES	COST (£)
FER230/25	25litre Fernox HP-5c Antifreeze/corrosion Inhibitor	138.40
PUMP003	Pair rubber mounting feet - 600mm and fixing	54.00
FER213	Fernox TF1 magnetic Hydroclonic 28mm filter	164.40
HON001	Honeywell 28mm 3 port diverting valve	200.00
SEC015	50litre Wall Mounted Buffer Tank	225.00
SEC014	ASHP Hydraulic Separator < 40kw	172.50

CODE	HEAT PUMP CYLINDERS ONLY	COST (£)
AQUA024	170lt Unvented Stainless Steel Heat Pump Cylinder	884.00
AQUA001	200lt Unvented Stainless Steel Heat Pump Cylinder	966.23
AQUA002	250lt Unvented Stainless Steel Heat Pump Cylinder	989.83
AQUA003	300lt Unvented Stainless Steel Heat Pump Cylinder	1,161.46
AQUA004	400lt Unvented Stainless Steel Heat Pump Cylinder	1,829.16
AQUA005	500lt Unvented Stainless Steel Heat Pump Cylinder	1,958.04
AQUA006	200lt Unvented heat pump/solar cylinder	1,251.12
AQUA007	250lt Unvented heat pump/solar cylinder	1,286.50
AQUA008	300lt Unvented heat pump/solar cylinder	1,340.62
AQUA009	400lt Unvented heat pump/solar cylinder	2,041.62
AQUA010	500lt Unvented heat pump/solar cylinder	2,053.29

FLOORTHERM

RENEWABLES LTD.

CODE	PP HEAT PUMP CYLINDERS AND INTEGRAL BUFFER TANK	COST (£)
AQUA100	200 litre hot water/20 litre buffer	2,300.00
AQUA200	250 litre hot water/20 litre buffer	2,450.00
AQUA300	300litre hot water/20 litre buffer	2,650.00
<i>Note: Cylinders pre-plumbed & wired with surface mounted wiring centre and controller. Two heating zones included but options available upon request.</i>		

PRE-PLUMBED/WIRED MONOBLOC HEAT PUMP PACKS

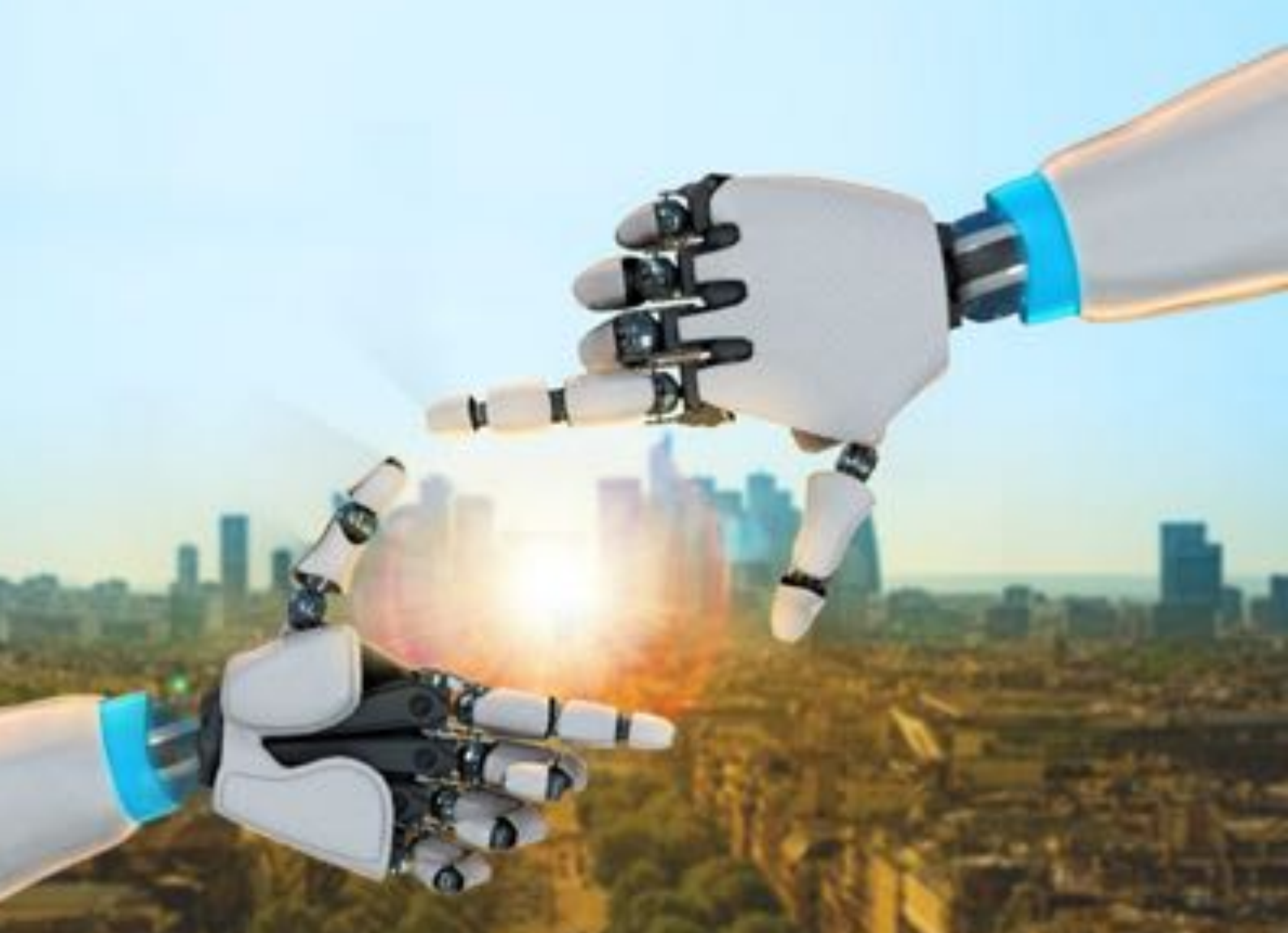
CODE	8KW HEAT PUMP & 200L PP*	COST (£)
DOMCLIMA8	Domusa Monobloc Clima 8kw	5,581.48
QABS1	1" Lever isolating valve (x2)	
PUMP003	Pair rubber mounting feet 600mm & fixing kit	
FER230/25	25 litre Fernox HP-5c Antifreeze/corrosion Inhibitor	
FER213	Fernox TF1 magnetic Hydroclonic 28mm filter	
AQUA100	200 litre hot water/20 litre buffer	

CODE	11KW HEAT PUMP & 250L PP*	COST (£)
DOMCLIMA11	Domusa Monobloc Clima 11kw	6,331.48
QABS1	1" Lever isolating valve (x2)	
PUMP003	Pair rubber mounting feet 600mm & fixing kit	
FER230/25	25 litre Fernox HP-5c Antifreeze/corrosion Inhibitor	
FER213	Fernox TF1 magnetic Hydroclonic 28mm filter	
AQUA200	250 litre hot water/20 litre buffer	

CODE	16KW HEAT PUMP & 300L PP*	COST (£)
DOMCLIMA16	Domusa Monobloc Clima 16kw	7,681.48
QABS1	1" Lever isolating valve	
PUMP003	Pair rubber mounting feet 600mm & fixing kit	
FER230/25	25 litre Fernox HP-5c Antifreeze/corrosion Inhibitor	
FER213	Fernox TF1 magnetic Hydroclonic 28mm filter	
AQUA300	300litre Hot water/20 litre buffer	

PP* = Pre-Plumbed

€ - EURO PRICING AVAILABLE UPON REQUEST



16

DAIKIN AIR SOURCE SYSTEMS

"As a leading heat supplier, Daikin's product portfolio comprises a wide range of highly energy-efficient renewable energy systems."

FLOORTHERM
RENEWABLES LTD.

DAIKIN HEATING SYSTEMS

AIR TO WATER HEAT PUMPS

Daikin Altherma air-to-water heat pump is a renewable energy heating and hot water solution, ideally suited for the UK housing market. Using air as a renewable heat source and heat pump technology with Daikin's advanced inverter compressor, Daikin Altherma delivers high seasonal efficiencies, low running costs and reduced carbon emissions compared with traditional systems.

Launched in 2006, with over 400,000 pumps installed across Europe. Daikin Altherma is the leading authority on air-to-water heat pumps.

Daikin offers the most comprehensive and flexible range of air-to-water heat pumps in the market today. Heat pumps are suitable for houses, flats and both new build and refurbishment projects.

Range includes Low Temperature (Split & Monobloc) and High Temperature.



DAIKIN ALTHERMA 3



The first air to water heat pump powered by global warming potential refrigerant R32.



Bluevolution technology with A+++ rating delivers heating efficiency of 5.4 COP at 7-35°C.



Delivering temperatures of up to 65°C at high efficiency, for reliable operation even in the coldest weather.



All hydraulic elements included in the indoor unit; refrigerant charged in outdoor unit for fast installation.

DAIKIN HEATING SYSTEMS

AIR TO WATER HEAT PUMPS

Daikin heat pumps are categorised into 3 groupings:

1



2



3



1 R32 Low Temperature Split 4-8kW

- ◆ Latest inverter technology
- ◆ Highly efficient
- ◆ Low running costs
- ◆ Unique Daikin 'Bluevolution' technology
- ◆ Advanced controls incorporating the 'Daikin Eye'
- ◆ Leaving water temperature up to 65°C
- ◆ Easy to install, commission and control
- ◆ Stylish, modern design

2 R410A Low Temperature Split 4-16kW

- ◆ Wall hung or floor standing integrated indoor units
- ◆ Flexible indoor & outdoor unit siting up to 50m apart

3 Low Temperature Monobloc 5-16kW

- ◆ All key hydraulics built-in, e.g. expansion vessel & circulation pump
- ◆ Sealed refrigerant circuit with no F-gas needed for installation

PRICE LIST 2019

DAIKIN HEATING SYSTEMS

CODE	OUTDOOR UNITS (R32)	COST (£)
DAIK100	DA 3 4kw Outdoor unit ERGA04DVA	1,602.90
DAIK101	DA 3 6kw Outdoor unit ERGA06DVA	1,635.40
DAIK102	DA 3 8kw Outdoor unit ERGA08DVA	2,189.20
CODE	INDOOR UNITS (R32)	COST (£)
DAIK400	DA 3 4kw Indoor unit EHBH04D6V	1,957.80
DAIK401	DA 3 6/8kw Indoor unit EHBH08D6V	1,995.50
CODE	OUTDOOR UNITS (LT SPLIT)	COST (£)
DAIK001	DA LT 4kw Outdoor unit ERLQ004CV3	1,602.90
DAIK002	DA LT 6kw Outdoor unit ERLQ006CV3	1,635.40
DAIK003	DA LT 8kw Outdoor unit ERLQ008CV3	2,189.20
DAIK004	DA LT 11kw Outdoor unit ERLQ011CV3	3,393.00
DAIK005	DA LT 14kw Outdoor unit ERLQ014CV3	3,910.40
DAIK006	DA LT 16kw Outdoor unit ERLQ016CV3	4,274.40
CODE	WALL-MOUNTED INDOOR UNITS	COST (£)
DAIK033	LT 4kw Indoor unit 3kw back up EHBH04CB3V	1,696.50
DAIK034	LT 6/8kw Indoor unit 3kw back up EHBH08CB3V	1,732.90
DAIK035	LT 11kw Indoor unit 3kw back up EHBH11CB3V	2,405.00
DAIK037	LT 14/16kw Indoor unit 3kw back up EHBH16CB3V	2,405.00
DAIK036	LT 11kw Indoor unit 9kw back up EHBH11CB9W	2,575.30
DAIK038	LT 14/16kw Indoor unit 9kw back up EHBH16CB9W	2,575.30
DAIK028	Daikin 3 port hot water kit for non- daikin cylinder EKUMPART	260.00
DAIK032	Daikin Altherma LT Contoller	124.80
CODE	FLOOR-MOUNTED INDOOR UNITS W/BUILT-IN CYLINDERS	COST (£)
DAIK048	Daikin Altherma LT 4kw with in-built 180l cylinder EHVH04SU18CB6W	3,347.50
DAIK049	Daikin Altherma LT 6/8kw with in-built 180l cylinder EHVH08SU18CB6W	3,560.70
DAIK050	Daikin Altherma G3 kit for 180lt floor standing unit EKVSU180A	280.80
DAIK051	Daikin Altherma LT 6/8kw with in-built 260l cylinder EHVH08SU26CB6W	3,584.10
DAIK052	Daikin Altherma LT 11kw with in-built 260l cylinder EHVH11SU26CB6W	4,228.90
DAIK053	Daikin Altherma LT 14/16kw with in-built 260l cylinder EHVH16SU26CB6W	4,228.90
DAIK054	Daikin Altherma G3 kit for 260lt floor standing unit EKVSU260A	479.70



CODE	MONOBLOCS	COST (£)
DAIK039	5kw outdoor unit EDLQ05CV3	2,658.50
DAIK040	7kw outdoor unit EDLQ07CV3	3,101.80
DAIK10001	11kw outdoor unit EDLQ011CV3	3,677.70
DAIK10002	14kw outdoor unit EDLQ014CV3	4,247.10
DAIK10003	16kw outdoor unit EDLQ016CV3	4,964.70
DAIK041	Daikin monobloc wiring centre EKCB07CV3	314.60
DAIK032	Daikin Altherma LT Controller	124.80
DAIK045	3kw back heater kit EKMBUHC3V3	646.10
CODE	CYLINDERS	COST (£)
DAIK076	Daikin 180lt unvented hot water cylinder EKHWSU180/EX/EXP	1,485.90
DAIK077	Daikin 200lt unvented hot water cylinder EKHWSU200/EX/EXP	1,498.90
DAIK078	Daikin 250lt unvented hot water cylinder EKHWSU250/EX/EXP	1,571.70
DAIK079	Daikin 300lt unvented hot water cylinder EKHWSU300/EX/EXP	1,645.80

€ - EURO PRICING AVAILABLE UPON REQUEST

Talk to our experts about Altherma today!

www.ftunderfloor.com



21

MECHANICAL HEAT RECOVERY VENTILATION

“Dwellings with a Mechanical Heat Recovery Ventilation system will reuse up to 95% of the heat that is normally lost to the atmosphere.”

FLOORTHERM
RENEWABLES LTD.

WHAT IS MHRV?

MECHANICAL HEAT RECOVERY VENTILATION

As new buildings become more air tight, the levels of natural ventilation (which increases heat loss but improves the energy efficiency of the building) are greatly reduced, thus restricting the levels of fresh air entering the building; a necessity for any dwelling.

Having adequate ventilation in your dwelling is important for a number of reasons:

- ◆ Improves the indoor air quality
- ◆ Prevents mould & condensation
- ◆ Eliminates bad odours
- ◆ Distributes regenerated heat evenly
- ◆ Eliminates the need for bathroom fans & window vents, reducing heat loss
- ◆ Provides natural cooling in warm weather
- ◆ Reduces the risk of asthma & other health issues
- ◆ Complies with all building control regulations
- ◆ Reuses up to 95% of the heat normally lost to the atmosphere



HOW DOES AN MHRV SYSTEM WORK?

A mechanical heat recovery system is an energy efficient, controlled and balanced ventilation system. It extracts stale, moist, used air from the wet rooms, utility rooms & kitchen areas from within the house and replaces it with fresh and filtered recovered air to all living areas without letting the heat escape.

The dwelling is fully ventilated throughout all seasons of the year, with as much as 95% of the normally wasted heat being recovered, providing the end user with a potential saving on 20% on your annual running costs, while allowing the property to remain airtight with no window vents, creating a healthier and quieter internal environment.

HEAT RECOVERY UNITS

VENT-AXIA LO-CARBON SENTINEL KINETIC RANGE

FloorTherm provides the full range of Vent Axia heat recovery units. For over 80 years, Vent Axia has set the standard in ventilation. It has vast experience in heat recovery solutions and their comprehensive product range ensures there is always a suitable product for any project.

The product range for mechanical ventilation heat recovery in the residential market is the Lo-Carbon Sentinel Kinetic. It is the first in a new range of MHRV systems to incorporate multi-unique features. With Wi-Fi & app control, along with integrated digital controls for easy installation. This range is designed with developers, specifiers & installers in mind.



LO-CARBON SENTINEL KINETIC BH UNIT

The Kinetic BH unit is compact, quiet & can provide heat recovery for a dwelling requiring 45l/s of fresh air. The unit is designed with space saving in mind and it's easy to install.

◆ VOLT-FREE SWITCH TERMINALS ◆ SUMMER BYPASS FUNCTION ◆ 45L/S OUTPUT



LO-CARBON SENTINEL KINETIC PLUS

The Sentinel Kinetic Plus offers up to 91% efficiency, based on backward curved impeller design, ensuring lowest possible energy consumption.

◆ VOLT-FREE SWITCH TERMINALS ◆ ULTRA QUIET RUNNING MODE ◆ 85L/S OUTPUT



LO-CARBON SENTINEL KINETIC HIGHFLOW

The Sentinel Kinetic Highflow units offer up to 91% efficiency, based on backward curved impeller design, ensuring lowest possible energy consumption.

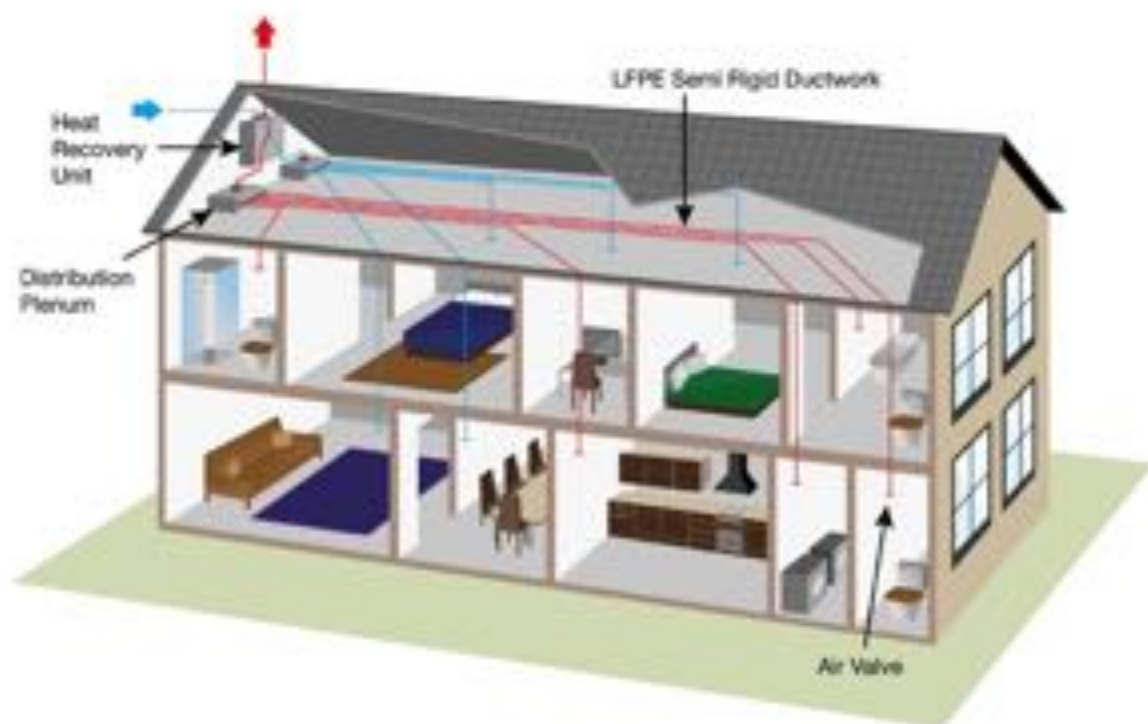
◆ VOLT-FREE SWITCH TERMINALS ◆ ULTRA QUIET RUNNING MODE ◆ 120L/S OUTPUT



LO-CARBON SENTINEL KINETIC ADVANCE

The Lo-Carbon Sentinel Advance is already award winning & is seen as the new industry standard as heat recovery enters the next generation.

◆ VOLT-FREE SWITCH TERMINALS ◆ ULTRA QUIET RUNNING MODE ◆ 60L/S OUTPUT



PRICE LIST 2019

MECHANICAL HEAT RECOVERY VENTILATION

FLOORTHERM
RENEWABLES LTD.

CODE	HEAT RECOVERY UNITS	COST (£)
VENT00002	Vent Axia Kinetic BH (RH)	1,762.16
VENT00003	Vent Axia Kinetic BH (LH)	1,762.16
VENT00001	Vent Axia Kinetic Plus B	1,962.58
VENT00004	Vent Axia Kinetic Highflow (RH)	2,972.42
VENT00005	Vent Axia Kinetic Highflow (LH)	2,972.42
VENT00007	Vent Axia Kinetic Advance S	2,245.83

CODE	HEAT RECOVERY ACCESSORIES	COST (£)
VENT4000	Vent Axia Trickle/Boost switch	73.15
VENT2000	Vent Axia remote controller & cable	91.10
VENT3000	Vent Axia Wireless Enable kit	136.65

CODE	MECHANICAL VENTILATION	COST (£)
VENT00007	Vent Axia MV250 MEV unit	347.87
VENT00009	Vent Axia MV250H MEV unit	411.10
VENT2001	Vent Axia MultiVent Controller	45.78

€ - EURO PRICING AVAILABLE UPON REQUEST

DUCTING SOLUTIONS

RADIAL AND BRANCHED SYSTEMS

All heat recovery ventilations system require ductwork & fittings to circulate the air throughout the dwelling. FloorTherm Renewables supply the complete range of high end top quality duct solutions in conjunction with our complementary design service to suit any design specification.



RADIAL SYSTEM USING SEMI-RIGID CIRCULAR DUCTING

Radial ducting system is the latest system to transport the air throughout properties in a more efficient & quieter manner. Radial ducting is suitable for all types of dwelling, particularly where design flexibility is required.

The semi-rigid duct has a corrugated outside and smooth inner surface, which has an anti-static and antibacterial lining, the pipe is crushproof, semi-flexible and when connected to the manifold creates a zero air-loss seal. Its available in both 75mm & 90mm diameters.

- ◆ 50% QUICKER INSTALLATION ◆ NO SEALANT REQUIRED ◆ RING STIFFNESS = 8kN/M2 (ENISO 9969) ◆ 85% LESS CONNECTIONS
- ◆ HYGIENIC - SMOOTH INNER SURFACE ◆ BEND RADIUS = 150MM (MIN.) ◆ AVAILABLE IN 50M COILS



BRANCHED SYSTEM USING RIGID DUCTWORK

Rigid ducting is commonly used as it's a more cost-effective solution for installing a ventilation system. PVC Rigid ductwork has been used for over 50 years in domestic installations.

The rigid ductwork system comprises of solid PVC ductwork in round or flat-channel shapes which are typically Ø150mm (220x90mm equivalent), Ø125mm (204x60mm equivalent) or Ø100mm (110x54mm equivalent). The duct work is manufactured from flame resistance self-extinguishing materials and offers a wide of components to meet all installation requirements.

- ◆ COST EFFICIENT ◆ EXCELLENT AIRFLOW RATES ◆ SUITABLE FOR DIY INSTALLATIONS ◆ SUITABLE FOR EXPOSED LOCATIONS
- ◆ CAN BE COMMERCIALY CLEANED ◆ AVAILABLE FROM 100MM TO 150MM DIAMETERS

For a full list of products available, visit
www.ftunderfloor.com or call us on +44(0)28 30 050 350

PRICE LIST 2019

DUCTING SOLUTIONS

FLOORTHERM

RENEWABLES LTD.

CODE	SEMI-RIGID SYSTEM FITTING	COST (£)
LINLFPE01	50m's 63mm LFPE semi-rigid pipework	192.83
LINPLEN01	Plenum 125mm 1 spigot box	36.68
LINPLEN02	Plenum 125mm 2 spigot box	47.68
LINNPU	NPU 63mm coupling	10.95

CODE	MANIFOLDS & FITTINGS	COST (£)
LINMCU01	MCU manifold 6/0 125mm top connection	83.78
LINMCU02	MCU manifold 6/4 160mm top connection	111.13
LINMCU03	MCU manifold 8/0 160mm top connection	82.98
LINMHU01	MHU manifold 3/0 125mm side connection	74.28
LINMHU02	MHU manifold 6/0 160mm side connection	107.95
LINMHU03	MHU manifold 8/0 160mm side connection	136.48
LINMRU01	MRU manifold 12-0 160mm top connection	144.28
LINRCFU01	Female reducer 160-150mm	13.83
LINRCFU02	Female reducer 160-125mm	11.65

CODE	CIRCULAR PVC	COST (£)
MAN01001	100mm PVC 1m ductwork	6.33
MAN00008	125mm PVC 1m ductwork	7.04
MAN00007	125mm PVC 1.5m ductwork	9.38
MAN00108	150mm PVC 1.0m ductwork	9.79
MAN00107	150mm PVC 1.5m ductwork	18.29
MAN010003	100mm PVC Connector	1.07
MAN00002	125mm PVC Connector	2.12
MAN00101	150mm PVC Connector	2.86
MAN00012	125mm - 100mm PVC reducer	1.65
MAN00104	150mm - 125mm PVC reducer	2.34
MAN00011	125mm PVC 45deg Bend	5.83
LIN15045	150mm PVC 45deg Bend	17.99
MAN01002	100mm PVC 90deg Bend	4.18
MAN00009	125mm PVC 90deg Bend	6.27
MAN00109	150mm PVC 90deg Bend	8.91
MAN01006	100mm PVC Tee	8.28
MAN00010	125mm PVC Tee	9.24
MAN00110	150mm PVC Tee	12.49

CODE	RECTANGULAR PVC	COST (£)
MAN00300	204X60mm 1m length	5.80
MAN00301	204X60mm 1.5m length	9.27
MAN00400	220X90mm 1m length	10.59
MAN00401	220X90mm 1.5m length	15.84
MAN00303	204X60mm connector	3.47
MAN00402	220X90mm connector	4.02
MAN00308	204X60mm 45deg Bend	5.97
MAN00407	220X90mm 45deg Bend	17.15
MAN00306	204X60mm 90deg Horizontal Bend	7.01
MAN00405	220X90mm 90deg Horizontal Bend	8.53
MAN00311	204X60mm 90deg Vertical Bend	5.06
MAN00406	220X90mm 90deg Vertical Bend	6.55
MAN00312	204X60mm 45deg Vertical Bend	7.95
MAN00309	204X60mm Tee	12.62
MAN00408	220x90mm Tee	30.22
MAN00305	204x60mm 90 bend with 125mm adaptor	6.46
MAN00404	220x90mm 90 Bend with 150mm adaptor	6.08
MAN00310	204X60mm to 125mm straight adaptor	6.13
MAN00409	220X90mm to 150mm straight adaptor	7.18
MAN00313	204X60 to 220x90 flat channel adaptor	19.47

CODE	VENTS/TERMINALS	COST (£)
VENT0200	UB41 Universal terminal Black 500x500	75.00
MAN00215	150mm White External Wall Grill	7.84
MAN00213	150mm Brown External Wall Grill	7.84
MAN00214	150mm Black External Wall Grill	7.84

CODE	DIFFUSERS	COST (£)
MAN00207	Circular PVC 100mm diffuser	10.04
MAN00205	Circular Metal 125mm Extract Diffuser	10.84
MAN00206	Circular Metal 125mm Supply Diffuser	10.84

CODE	INSULATION	COST (£)
LINDUCT01	25mm Insulation duct wrap 1.2mx13.5mm	115.38
MAN00210	10m's 100mm Insulated flexible duct	53.38
MAN00280	10m's 100mm Insulated flexible duct	63.23
MAN00201	10m's 150mm Insulated flexible duct	74.58

CODE	ACCESSORIES	COST (£)
MAN00202	45m Roll Aluminium tape	12.15
DUCTSEAL	Duct sealant 310ml tube	4.59
FUR5BAN	Galvanised 10m strapping band	29.25
MPSZIP01	Self tapping screws 4.2x13mm (1000)	33.60

€ - EURO PRICING AVAILABLE UPON REQUEST



28

ALUMINIUM RADIATORS

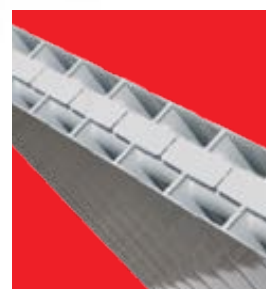
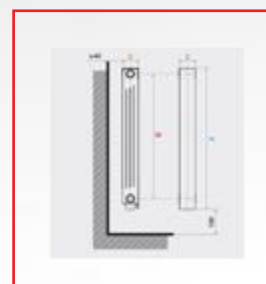
"The perfect solution for modern, efficient heating systems; the elegant Italian design offers a superior alternative to standard steel panel radiators."

FLOORTHERM
— RENEWABLES LTD. —

ALUMINIUM RADIATORS

JET PLANO RANGE

The FloorTherm Jet Plano range is a modern design that features closed columns on the front and rear sides preventing the build-up of dust. An Ideal option for modern, new build houses or retrofit upgrades with air source heat pumps. Due to the greater output, smaller radiators can be installed compared to the conventional option.



Jet Plano Aluminium Radiator Specifications



Cast radiators with connections



Quality aluminium alloy
(conducts heat 4x faster than steel)



Functional at very low temperatures



EN44- compliant w / ISO 9001 & 14001 certification



OUTPUT
113W/m
PER SECTION

The FloorTherm aluminium radiators provide rapid heat transmission to all occupied zones and are ideal for low temperature heating, ie, heat pump installations.

PRICE LIST 2019

JET PLANO RANGE

CODE	DIMENSIONS	OUTPUT EN442 Delta T 30 (watts)	OUTPUT EN442 Delta T 50 (watts)	WATER CONTENT (L'S)	WEIGHT (KG)	PRICE (£)
RPLA501	566x80mm	51	107.00	0.30	1.26	£22.56
RPLA502	566x160mm	114	214.00	0.60	2.52	£45.12
RPLA503	566x240mm	153	321.00	0.90	3.78	£67.68
RPLA504	566x320mm	204	428.00	1.20	5.04	£90.24
RPLA505	566x400mm	255	535.00	1.50	6.30	£112.80
RPLA506	566x480mm	306	642.00	1.80	7.56	£135.36
RPLA507	566x560mm	357	749.00	2.10	8.82	£157.92
RPLA508	566x640mm	408	856.00	2.40	10.08	£180.48
RPLA509	566x720mm	459	963.00	2.70	11.34	£203.04
RPLA510	566x800mm	510	1070.00	3.00	12.60	£225.60
RPLA511	566x880mm	561	1177.00	3.30	13.86	£248.16
RPLA512	566x960mm	612	1284.00	3.60	15.12	£270.72
RPLA513	566x1040mm	663	1391.00	3.90	16.38	£293.28
RPLA514	566x1120mm	714	1498.00	4.20	17.64	£315.84
RPLA515	566x1200mm	765	1605.00	4.50	18.90	£338.40
RPLA516	566x1280mm	816	1712.00	4.80	20.16	£360.96
RPLA517	566x1360mm	867	1819.00	5.10	21.42	£383.52
RPLA518	566x1440mm	918	1926.00	5.40	22.68	£406.08
RPLA519	566x1520mm	969	2033.00	5.70	23.94	£428.64
RPLA520	566x1600mm	1020	2140.00	6.00	25.20	£451.20

CODE	INSTALLATION PACK	COST (£)
POL001	4no: 1 x 1/2" bushens	
	1no: 1/2" air vent	
	1no: 1/2" plug	16.00

CODE	ACCESSORIES	COST (£)
MCA001	Aluminium radiator bracket set	14.00
LPLA01	1" connection nipple	0.80

All dimensions are provided in mm unless otherwise stated.

€ - EURO PRICING AVAILABLE UPON REQUEST



APP CONTROL

HEATMISER NEOSTAT RANGE

The Neo system has been designed to offer complete local and App control of your heating, hot water and plug-in appliances. With Neo you can control your heating from anywhere using your SmartPhone or tablet. The neoAir offers a totally wire-free alternative to the neoStat and is perfect for extensions or additional zones.

Connectivity Standard

Mesh Network Topology (neoStat)
Point to Point (neoAir)

Lock Facility

Yes - All Models

SmartPhone App

Apple iPhone/iPad
Android
Kindle
Windows



HomeKit Compatible

HomeKit and the Home app in iOS lets you securely control any "Works with Apple HomeKit" accessory. You can also organise your accessories by room, manage multiple accessories at the same time, control your home with Siri and more.



Multi-Zone

The Heatmiser Neo Network system has been built from the ground up with Multi-Zone homes in mind. The neoHub co-ordinates the data between each Neo thermostat on the network.



API - Third Party Integration

Our published API (JSON) makes it easy for third party integration companies to integrate our Neo Network System with leading home automation brands. Products from companies such as Control4 and Crestron.

IFTTT

JUST ASK
amazon alexa

Works with
Apple HomeKit

heatmiser neo



GET IN TOUCH

FloorTherm Renewables Ltd
Greenbank Industrial Estate
Newry, BT 34 2QU
Phone: +44 (0)2830 050 350
Email: info@ftunderfloor.com
Website: www.ftunderfloor.com

THE WARMTH
BENEATH
YOUR FEET.

Copyright © 2019 FloorTherm Renewables. All Rights Reserved.
Brochure Design by Martin at McCabe Graphics.

